



Norwood Park Road, SE27 | £825,000

020 8702 9333

[crystalpalace@pedderproperty.com](mailto:crystalpalace@pedderproperty.com)

**pedder**  
We live local







# In General

- Three bedroom semi-detached house
- 26ft through reception room
- No onward chain
- Backing directly onto Norwood Park
- Off street parking
- Spacious kitchen / diner
- Excellent condition
- Characterful features

# In Detail

A superbly presented three bedroom semi-detached house, situated on a sought-after residential road in West Norwood.

This lovingly maintained and upgraded family home has been in the same ownership for many years and boasts a wealth of characterful features that create a warm and inviting atmosphere. The welcoming entrance hall features stained-glass windows and ornate coving, leading through to an impressive 26ft through-reception room with shuttered windows, bespoke cabinetry and shelving, solid wood flooring, and a striking fireplace with a marble surround. Double doors open into a spacious kitchen/diner, an extension of the original build, fitted with bespoke cabinetry in an attractive sage green—an ideal space for informal dining or enjoying a morning coffee overlooking the garden. The remainder of the ground floor comprises a practical utility room and a guest WC.

Upstairs, there are three well proportioned bedrooms and a fully tiled family bathroom. In addition, there is a partially converted loft room with skylights and eaves storage, offering a versatile space suitable for use as an occasional home office.

Externally, the property benefits from a lawned rear garden with side access and a patio seating area, backing directly onto Norwood Park. The sunny south-easterly aspect makes it ideal for relaxing and entertaining during the summer months. Also, off street parking at the front of the property.

Norwood Park Road is a quiet residential street, predominantly made up of similar-style properties, and is conveniently located for West Norwood and Gipsy Hill rail links, the High Street, central Crystal Palace, and highly regarded local schools.

No onward chain.

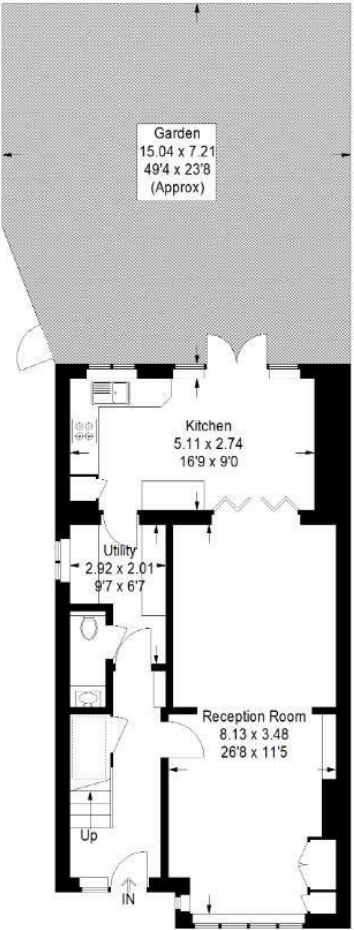
EPC: D | Council Tax Band: D



# Floorplan

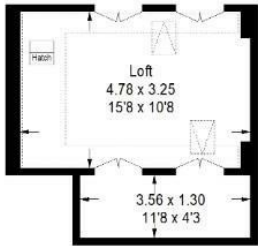
## Norwood Park Road, SE27

Approximate Gross Internal Area  
101.1 sq m / 1088 sq ft  
Loft = 20.7 sq m / 223 sq ft  
Total = 121.8 sq m / 1311 sq ft

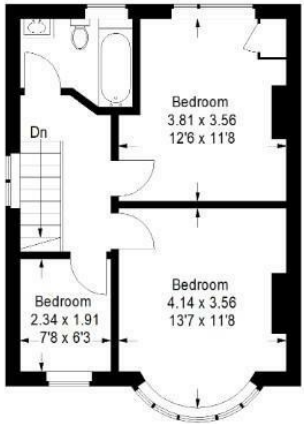


Ground Floor

Reduced headroom below 1.5 m / 5'0"

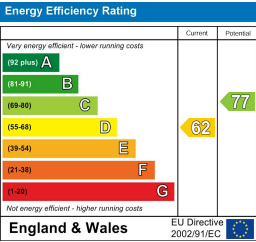


Loft



First Floor

Copyright www.pedderproperty.com © 2026  
These plans are for representation purposes only as defined by RICS - Code of Measuring Practice. Not drawn to Scale. Windows and door openings are approximate. Please check all dimensions, shapes and compass bearings before making any decisions reliant upon them.



Pedder Property Ltd trading as Pedder for themselves and for the vendor/landlord of this property whose agents they are, give notice that (1) these particulars do not constitute any part of an offer or contract, (2) all statements contained within these particulars are made without responsibility on the part of Pedder or the vendor/landlord, (3) whilst made in good faith, none of the statements contained within these particulars are to be relied upon as a statement of representation or fact, (4) any intending purchaser/tenant must satisfy him/herself by inspection or otherwise as to the correctness of each of the statements contained within these particulars, (5) the vendor/landlord does not make or give either Pedder or any person in their employment any authority to make or give representation or warranty whatsoever in relation to this property.